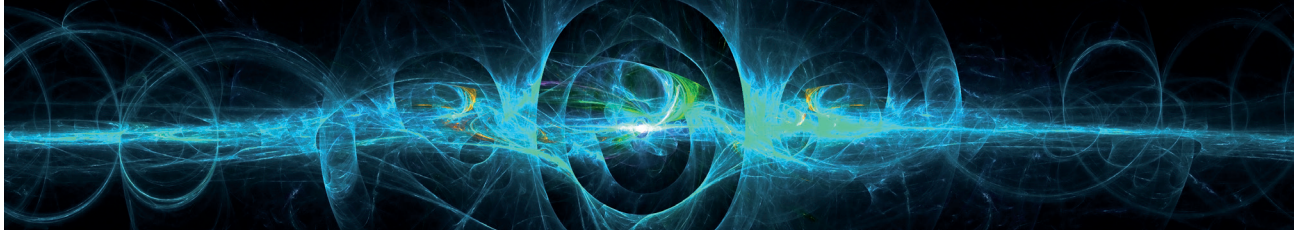


# EMC and Product Safety

Electromagnetic Compatibility and Electrical Safety are fundamental requirements that a product has to fulfil if you want to bring it to the market. All electrical equipment must be free of interference and must function properly even in the presence of electromagnetic disturbances. Products under test must also pass stress tests, such as those related to energy, mechanical hazards, heat, fire, radiation or chemical hazards. This is exactly what cetecom advanced does in its laboratories: Check whether your product complies with current EMC and safety standards.



## ELECTROMAGNETIC COMPATIBILITY

cetecom advanced has many years of experience in conducting regulatory EMC testing and obtaining approvals in a timely manner. cetecom advanced provides comprehensive EMC testing in accordance with the EMC compatibility requirements of Europe, the United States, Canada, Japan and Korea. EMC test reports issued by cetecom advanced are recognized by official bodies, regulatory agencies and governments around the world. cetecom advanced is also accredited for almost all relevant EMC standards based on various international EMC directives and guidelines, such as:

- RE Directive (2014/53/EU)
- EMC Directive (2014/30/EU)
- Medical devices Regulation (EU) 2017/745
- In vitro diagnostic medical devices Regulation (EU) 2017/746
- ECE Regulation R10
- Conformity Assessment Body (CAB) US (FCC) & Canada (ISED)

As a Notified Body under the RE Directive, cetecom advanced is able to assist in the preparation of test plans for radio products in areas where there are different or no harmonized standards.

## EMC AUTOMOTIVE

Electrical and electronic subassemblies (ESA) in vehicles have become increasingly important in recent years. They are present in modern vehicles in large numbers with various functions and tasks. cetecom advanced can take into account both regulatory aspects and industry requirements.

cetecom advanced can offer the following Automotive Services:

- Regulatory EMC testing of electric/electronic subassemblies for motor vehicles
- E-mark (E1, E13) - designated by KBA and SNCH as a technical service for testing according to ECE R 10
- EMC testing according to requirements of the automotive industry, according to manufacturer's specification, agriculture, forestry and construction machines

## ELECTRICAL SAFETY

cetecom advanced is accredited test lab according to:

- IEC/EN 62368-1 (Audio/video, information and communication technology equipment)
- IEC/EN 60601-x (Medical electrical equipment)
- IEC/EN 61010-x (Electrical equipment in lab use)
- IEC/EN 62133-x (Batteries)

In addition, our test reports meet the requirements of the CB Scheme. More than 50 countries within and outside the EU currently participate in the CB Scheme. The CB Scheme offers manufacturers a simplified way to obtain multiple national safety certificates.

If you want to bring your product to the US and Canadian market, you will need NRTL approval. We are 'National Recognized Testing Laboratory' for testing and certification for the US and Canadian markets.

## SUPPLEMENTARY SERVICES

### RADIO

In our laboratory, we conduct compliance testing or testing in development for almost all radio frequency technologies from 0-500 GHz.

### HEALTH/SAR

Depending on the application or intended use, we can provide SAR measurements or EMF calculations to demonstrate compliance with applicable health standards.

### ENVIRONMENTAL SIMULATION

Our testing services include mechanical vibrations, climatic impact and IP protection class, among others.

### CERTIFICATION

We are Conformity Assessment body for EU (CE 0682), USA (FCC), Canada (ISED) and Japan (MIC). Furthermore, our International Type Approval team handles approvals in more than 180 countries.